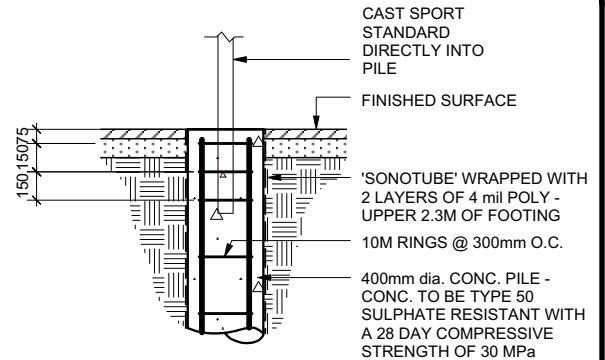
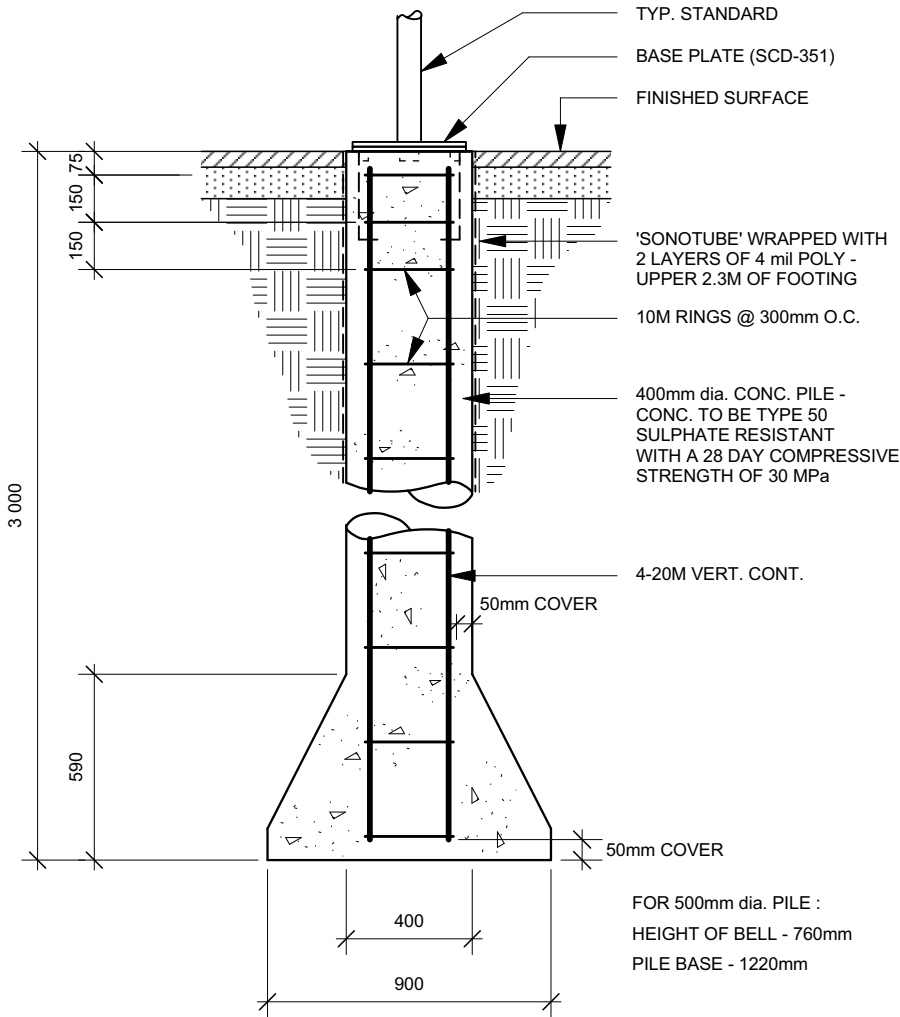


Drawing Title:

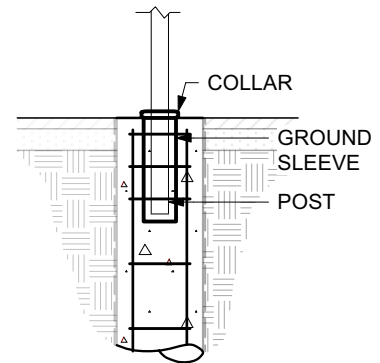
SPORTS STANDARD FOOTING DETAIL - BELL PILE

Drawing No:

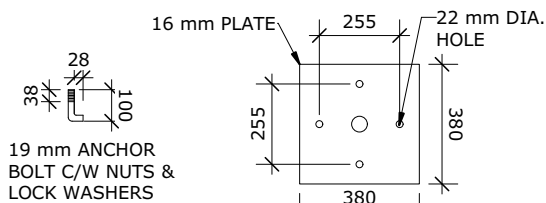
SCD-302



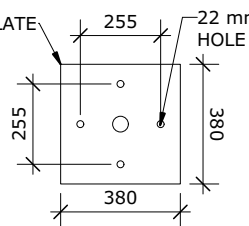
DIRECT BURY OPTION



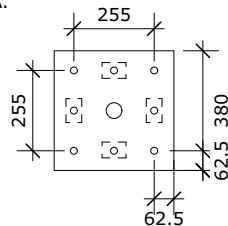
TENNIS / PICKLEBALL POST DEPTH AS PER MANUFACTURER'S INSTRUCTIONS



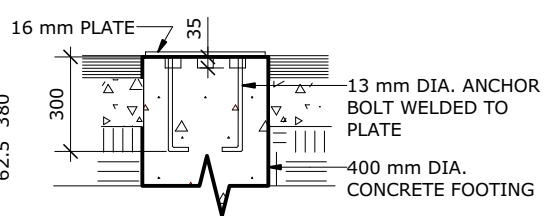
ANCHOR BOLT



BASE PLATE



ANCHOR PLATE PLAN



ANCHOR PLATE: ELEVATION

NOTE:

1. BASE PLATE, ANCHOR PLATE, ANCHOR BOLTS, NUTS AND WASHERS SHALL BE HOT DIPPED GALVANIZED.
2. SPORT STANDARD LENGTH / DEPTH VARIES, AS PER MANUFACTURERS' INSTALLATION INSTRUCTIONS.

SURFACE MOUNT OPTION

DIMENSIONS SHOWN ARE IN MILLIMETRES UNLESS OTHERWISE SPECIFIED

Revision:

DATE: Dec 09, 2019

SCALE: N.T.S.

DRAWN BY: GZ

The City of Winnipeg
 Planning, Property and Development Department
 Planning and Land Use Division
 Unit 15 - 30 Fort Street, Winnipeg, MB, R3C 4X5

